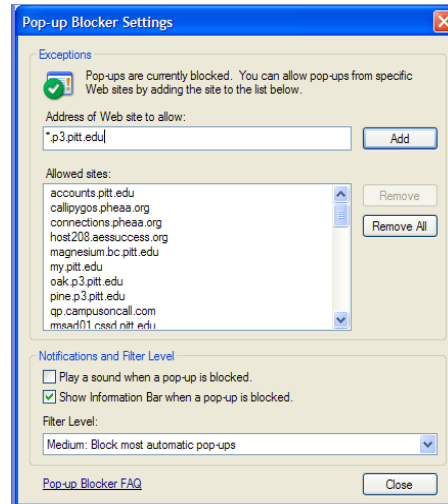


Pop-up Blockers

If Pop-up Blockers are on, you will have difficulty opening PRISM forms from the Home Page and the Navigator window.

To Turn off Pop-up Blockers for the PRISM applications only, from Internet Explorer or the PRISM Home page, click:

1. Tools
2. Pop-up Blocker
3. Pop-up Blocker Settings
4. Add “*.p3.pitt.edu” to the “Address of Web site to allow:” field
5. Click Add, and then Close



Trusted Sites

To ensure that PRISM forms work correctly, you should also add the PRISM and the corresponding server addresses as a trusted sites.

From Internet Explorer or the PRISM Home Page, click:

1. Tools
2. Internet Options
3. Security
4. Trusted Sites
5. Sites
6. Uncheck “Require server verification...”
7. Add the following:
 - *p3.pitt.edu
 - oam.pitt.edu
 - ping.pitt.edu
 - idp.pitt.edu
 - oidprdv.p3.pitt.edu
8. Ok
9. Ok
10. Clear your browsing history and restart the browser.

